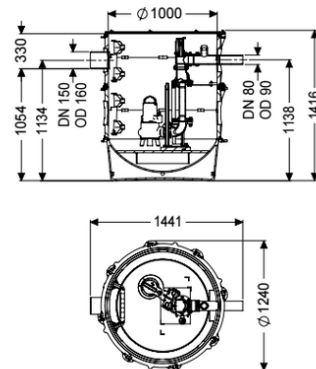


## Pumping station Aquapump XL Tronic, GTF 1600-S1



### Article information

Item no.: 8743020  
GTIN: 4026092075746  
Price group: 60

### Advantages

- Maximum safety
- Flexible installation
- Also handles large quantities of wastewater

### Description

The pumping station without sewage wastewater is equipped with one or two submersible pumps and a backflow preventer. The collection tank made of permanently resistant polymer (PE) has an open pump tank with universal connection options. Quick-release closures enable the integrated components to be removed easily. The KESSEL modular system provides different engineering chamber options as accessories for the further layout. Stainless steel pump removal chains available as accessory for each installation depth - Article number:

680528 = Length 2 m 680529 = Length 3 m  
680530 = Length 4 m 680531 = Length 5 m

Variant

Note on installation depth:

Type of system:

Shut-off valve:

Passage seal for conduit pipe (DN):

Access steps:

Passage seal for ventilation pipe (DN):

Installation:

Rim width:

Backwater protection:

Pressure pipe connection:

in combination with a chamber module

Single unit

Shut-off valve made of polymer

100

yes

100

Wet installation

Control unit

integrated

horizontal

#### General characteristics

|                         |  |
|-------------------------|--|
| Colour:                 | black  |
| Standard:               | EN 12050-2 as well as EN 12050-1 (without ATEX requirements)   |
| Type of wastewater:     | for wastewater with or without sewage (in installation situations without ATEX requirements)                               |
| Installation situation: | underground installation   |
| Delivery state:         | Pre-mounted for final assembly on site (pumps and sensor system must be fitted on site and control unit must be connected) |
| System type:            | Tronic   |

#### Dimensions

|  |         |
|--|---------|
| Net weight:  | 151 kg  |
| Gross weight:  | 174 kg  |
| Groundwater resistant from lower edge of base section: | 3000 mm |
| Length:  | 1370 mm |
| Width:   | 1240 mm |
| Height:  | 1416 mm |
| Packaging dimension:                                   | length  |
| Packaging dimension:                                   | width   |
| Packaging dimension:                                   | height  |

#### Tank/drain body

|   |         |
|---|---------|
| Pressure pipe connection (DN):                      | 80      |
| Pressure pipe connection (OD):                      | 90 mm   |
| Distance from centre of outlet pipe to tank bottom: | 1134 mm |
| Distance pipe bottom inlet to tank bottom:          | 1054 mm |
| Distance from centre of inlet pipe to tank bottom:  | 1134 mm |
| Distance from inlet pipe invert to top of tank:     | 330 mm  |
| Number of inlets:                                   | 150 mm  |
| Inlet nominal size (DN):                            | 160 mm  |
| Inlet nominal size (DN):                            | 150 mm  |
| Inlet type:   | 1       |
| Clear width of tank (LW):                           | 1000 mm |
| Pumping volume:                                     | 350 l   |

#### Pumping device

|                                 |                   |
|---------------------------------|-------------------|
| Pump control:                   | GTF 1600          |
| Number of pumps:                | 1                 |
| Weight:                         | 27 kg             |
| Connection type:                | Direct connection |
| Rated current:                  | 2,9 A             |
| Length of mains cable for pump: | 10 m              |
| Self-diagnosis system (SDS):    | I                 |
| Insulation class:               | H                 |

|  |                                |
|--|--------------------------------|
| Cos phi - power factor:                            | 0,72                           |
| Protection class control unit:                     | IP 68 (20m)                    |
| DSC:   | integrated                     |
| Max. temperature (permanent) of conveyed material: | 40 °C                          |
| Max. pumping capacity:                             | 49 m <sup>3</sup> /h           |
| Max. pumping height:                               | 9,3 m                          |
| Speed:   | 2900 U/min                     |
| Power P1:  | 1,6 kW                         |
| Power P2:  | 1,2 kW                         |
| Operating mode:                                    | S1                             |
| Type of pump connection cable:                     | H07RN-F 7G 1.5 mm <sup>2</sup> |
| Impeller type:                                     | Multi-vane impeller            |
| Control  |                                |
| Control unit:                                      | Comfort                        |
| Motor protection switch:                           | yes                            |
| Alarm sensor:                                      | Level sensor                   |
| Level measurement instrument:                      | Level sensor                   |
| Type of level measurement:                         | hydrostatic                    |
| Protection class probe:                            | IP 54                          |
| Mains frequency:                                   | 50 Hz                          |
| Operating voltage:                                 | 400 V                          |
| Connection type:                                   | Direct connection              |
| Potential-free contact:                            | yes                            |
| GSM interface:                                     | yes                            |
| Log book function:                                 | yes                            |
| Multi-line display:                                | yes                            |
| Battery buffering:                                 | yes                            |
| Self-diagnosis system (SDS):                       | yes                            |
| Rated current:                                     | 2,9 A                          |