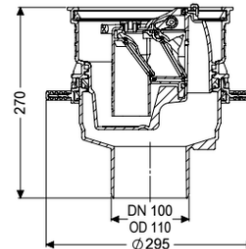
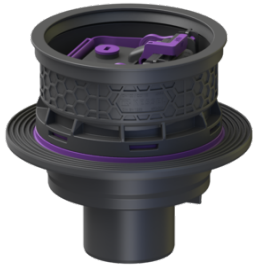


## Universal Plus basement drain vert., backwater valve, Waterpr.concr.



### Article information

Item no.: 27650  
GTIN: 4026092096932  
Price group: 10

### Advantages

- Sustainable due to use of recycled material
- Inlets above the floor slab, no penetration required
- Vertical outlet for easy installation and easy access to the main drainage pipe

### Description

In combination with an upper section, the polymer Universal Plus drain body is used for drainage of non-faecal wastewater and is equipped with a removable backwater valve with two backwater flaps, a one hand-lockable emergency closure and a sludge bucket. Including temporary protective cover.

#### Variant

Contents of sludge trap:	yes
Emergency closure:	yes
Waterproof flange:	Pre-assembled at the factory
Sealing water height:	60 mm
Mechanical backwater flaps:	2

#### General characteristics

Colour:	black
Standard:	EN 1253
Nominal size (DN):	100
Type of wastewater:	without sewage
Installation situation:	floor slab installation
Backwater protection:	Type 5

#### Dimensions

Net weight:	2,51 kg
Gross weight:	2,92 kg
Diameter:	295 mm
Cutout dimension, width:	310 mm
Cutout dimension, length:	310 mm
Vertical adjustment:	vertically adjustable upper section
Height:	270 mm
Packaging dimension:	length
Packaging dimension:	width
Packaging dimension:	height
Tank/drain body	
System:	vertical
Coverage features	
Contents of sludge trap:	yes