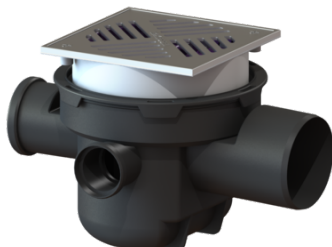


## Drain body The Universal DN 100, St. St. grat, Backwater protect



### Article information

Item no.: 27621  
GTIN: 4026092007839  
Price group: 10

### Advantages

- Flexible installation: vertically adjustable upper section rotatable
- Integrated backwater protection
- vertically adjustable

### Description

The polymer drain body is equipped with a removable backwater valve with two backwater flaps, one hand-lockable emergency closure and a sludge bucket. The drain body also has two inlets DN 50 and one inlet DN 70 with blind plug. Material:

PP

#### Variant

Contents of sludge trap:	yes
Emergency closure:	yes
Waterproof flange:	Pre-assembled at the factory
Mechanical backwater flaps:	2

#### General characteristics

Colour:	black
Standard:	EN 1253
Nominal size (DN):	100
Outer diameter (OD):	110 mm
Type of wastewater:	without sewage
Installation situation:	floor slab installation
Delivery state:	installation-ready
Backwater protection:	Type 5

#### Dimensions

Net weight:	3,23 kg
Gross weight:	3,55 kg
Cutout dimension, width:	320 mm
Cutout dimension, length:	400 mm
Installation depth:	216 - 266 mm
Vertical adjustment:	vertically adjustable upper section

Length:	380 mm
Width:	300 mm
Packaging dimension:	length
Packaging dimension:	width
Packaging dimension:	height

Tank/drain body	
System:	lateral

#### Coverage features

Type of cover:	Slotted cover
Cover material:	Stainless steel 14301
Colour of cover:	silver
Load class:	K 3 (EN 1253-1)
Grating material:	187 mm
Grid size, width:	187 mm
Grid size, height:	4 mm
Contents of sludge trap:	yes
Odour trap:	included

Cover	
Grating material:	187 mm
Grid size, width:	187 mm
Grid size, height:	4 mm